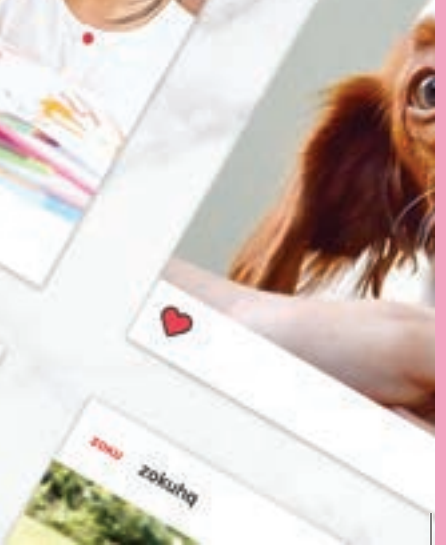
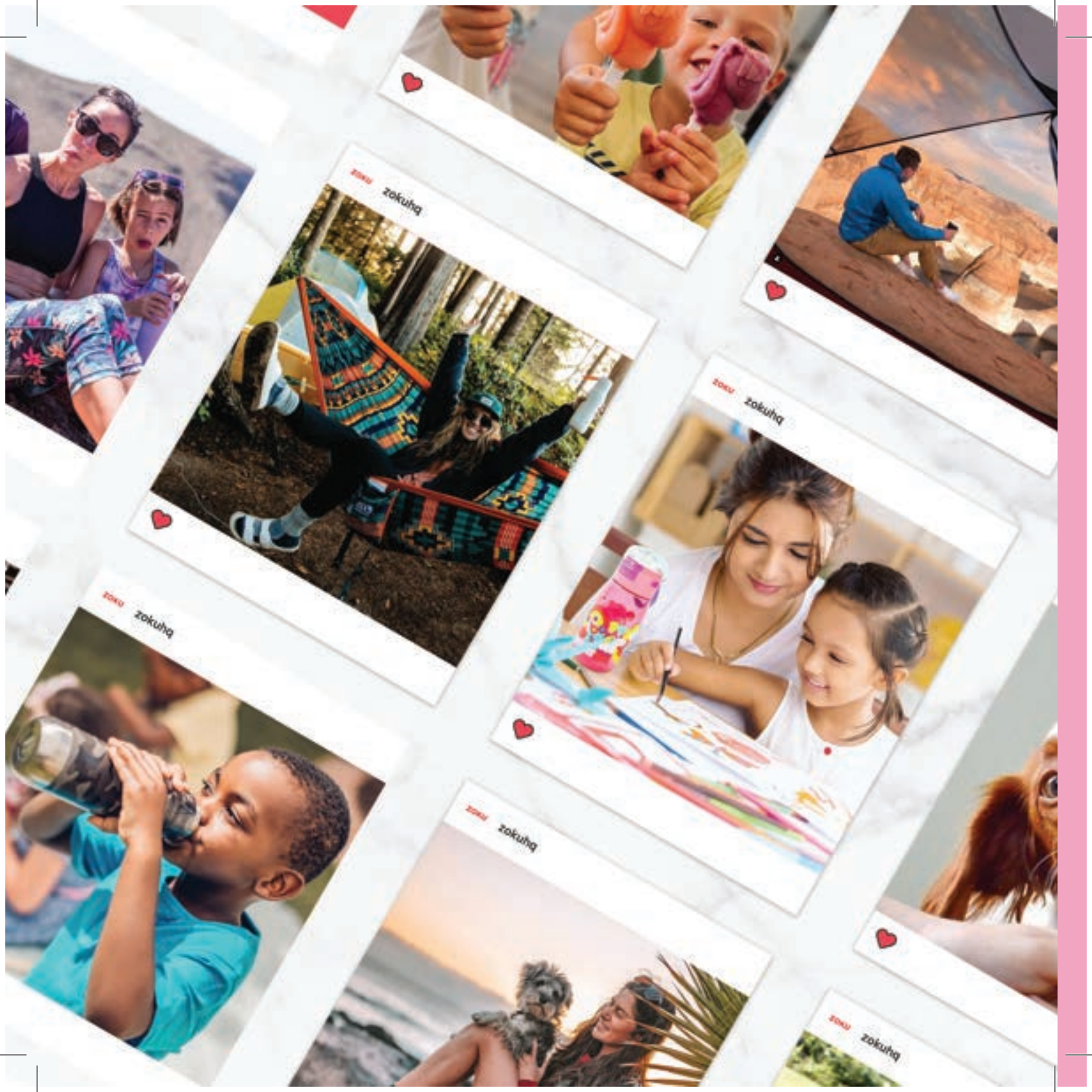


ZOKU[®]

Live Creatively



WELCOME TO OUR COLLECTION

At ZOKU, we believe in putting in the time to learn about our customers and their lives. Creating intuitive products made of the best quality materials. Designing products to please all the senses.

We value our customers, distributors, and co-workers. We are thankful for the relationships we have created and maintained year after year. The feedback we receive helps us bring to market only the best quality and most thoughtful products.

We look forward to sharing more news, products, and innovations in the year to come.



Contents

WHAT'S NEW	04
FOOD-TO-GO	06
KIDS LINE	20
DRINKWARE	36
COCKTAIL ICE	64
FROZEN TREATS	70
DISPLAYS	86
LICENSING	94

*What's
new?*



SHARK
POP MOLDS



KIDS FLIP
STRAW BOTTLE



KIDS FLIP GULP BOTTLE

CAT & DOG
POP MOLDS



KIDS FLIP
STRAW BOTTLE



Gropius) is "just a
gs and a glass over-
onzalez, one of the
denda Architects.
alled the Black Box, is
protect the fragile ar-
wings by instructor
y and student-made
The bottom level is de-
mlessly with the city
ilding sits. Mr. Gonz-
be completely open to
e glass-overcoat is nec-
ause Germany is often
erwise, the architects
sible to make the lower
like public space, con-
structure in the "legs"
double doors in the fa-
s past will be safely con-
ed box upstairs, but its
o drift in and out into the

attokais

by
sloped roof of this new of-
ndheim is reminiscent of
firm Snohetta's signature,
ational Opera and Ballet
The opera house's gently
it for pleasure; it's a public
ed feature of the Oslo wa-
erhouse's roof, by con-
ed for efficiency. It slants

FOOD-TO-GO

*Whether you're
taking a meal or snacks to
work, to school, or on the
road, we've got you
covered...snapped and
sealed, too!*

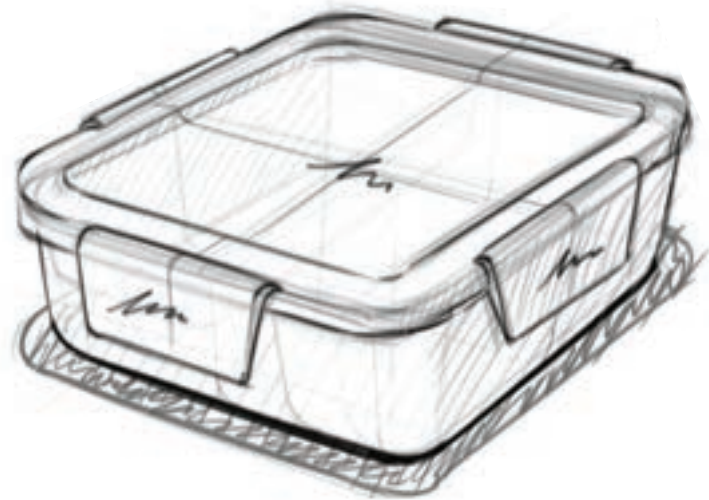


NEAT STACK™

Take your food on the road with Neat Stack™ containers. Each of the four sizes comes with its own color-coded band to help you quickly find the container you need. The universal, watertight latching lids and Neat Stack™ Freezer Packs fit the 3-, 4-, and 5-cup containers.

FEATURES

- Watertight latching lids
- Reusable freezer packs
- 5 cup container
- 4 cup container
- 3 cup container
- 1.5 cup container



Design Details

1 Color coded bands help you quickly find the size you need

2 Leak-proof lids provide watertight seals with robust latches

3 Microwave safe plastic—BPA and phthalate-free





PICNIC PERFECT

Take Taco Tuesday on a picnic. Our Neat Stack containers will help the party go anywhere.



**NEAT STACK™
11PC SET**

5 cup container, 4 cup container, 3 cup container, two 1.5 cup containers, one reusable freezer pack, and matching lids.

MODEL #ZK301



**NEAT STACK™
7PC SET**

4 cup container, two 1.5 cup containers, matching lids, and one reusable freezer pack.

MODEL #ZK302



**NEAT STACK™
3PC LUNCH SET**

4 cup container, one lid, and one reusable freezer pack.

MODEL #ZK309



**NEAT STACK™
FREEZER PACKS
(SET OF 4)**

Four reusable freezer packs.

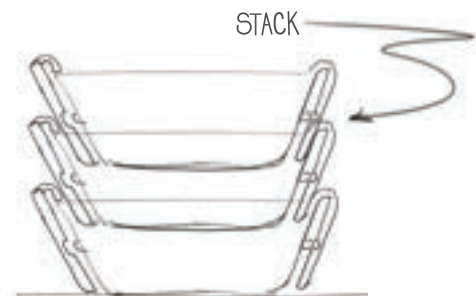
MODEL #ZK303



**NEAT STACK™
4PC SNACK SET**

Two 1.5 cup containers.

MODEL #ZK310



NEAT STACK™ FOOD JAR

Introducing ZOKU's Stainless Steel travel jar. Whether you're on the road or in the classroom, the vacuum insulated, double-walled design ensures your food will stay hot or cold for hours.

COLORS



MODEL #ZK305 10oz/295ml

MODEL #ZK306 16oz/465ml



Design Details

1

Small-diameter lid is easy to open for kids and adults alike

2

Wide mouth opening is easy to get into for effortless cleaning

3

Textured band provides comfortable grip and large opening is perfect for eating on the go

4

Vacuum insulated, double-walled 18/8 stainless steel



POCKET UTENSIL SET

ZOKU's Pocket Utensil Set is designed to replace single use plastic for good! The neatly nesting set of 3 utensils includes a spoon, fork and knife. The utensils stow snugly into the slim sanitary travel case. The complete set is made to fit in a pocket, purse, backpack or lunchbox. No sink? No problem, just put the soiled utensils back in the case and clean when you get home.

FEATURES

- 18/8 Stainless Steel construction
- Easy To Clean
- Dishwasher Safe
- Leakproof Compact Carrying Case keeps utensils clean and protected
- Small and Lightweight, ideal for travel

COLORS



MODEL #ZK308





TRAVEL HAND WIPES

This will be the newest addition to your kit of essential items, optimized for those moments throughout the day where sanitizing is top priority. The compact case comes with a tether that attaches to your bag for ready access. Simply pop the cap and 25 germ killing wipes are at your disposal. To help reduce waste, our wipes are palm sized (just the right size for most jobs) and fully biodegradable. This is the perfect solution for keeping your loved ones healthy as they return to school, office, airplane, or any shared public space. Makes a great companion to any lunch kit.

FEATURES

- 25 wipes per roll
- Made from Biodegradable fibers
- Kills 99.9% of germs that cause illness
- Wipe is palm sized—optimized to reduce waste
- Fresh, aloe vera scent
- Paraben and Phthalate free

COLORS



MODEL #ZK315



Design Details

- 1** Tether allows dispenser to attach to almost anything
- 2** Hinged cap keeps wipes moist and is easy to open with one hand
- 3** Case is compact so it lives comfortably in purse, backpack—basically anything with a pocket



TRAVEL HAND WIPES REFILLS

Refills are available in bulk packaging at a competitive price so you can stay well stocked and prepared for any adventure that may come your way.

MODEL #ZK316







KIDS COLLECTION

*Being a kid takes lots
of energy—so keep
everyone hydrated with
water bottles to match
any age, any style, and
any personality.*

KIDS FLIP STRAW BOTTLE

Drinking is as easy as flipping a switch. Simply press down on the back of the mouthpiece and the straw springs into position. When you're finished hydrating, the straw locks back into a protected, leak-proof position. Easy to clean and dishwasher safe.

FEATURES

- 14 oz./400ml
- Tritan bottle
- 100% Leak-proof silicone straw
- Soft touch carry loop
- Easy to clean/dishwasher safe

COLORS



*New
Patterns!*

MODEL #ZK201

Design Details

1

Smooth surfaces are easy on young fingers

2

Protective cover keeps mouthpiece clean

3

Simply press lever to open and close straw



KIDS FLIP GULP BOTTLE

For quick hydration, the Flip Gulp's button activated, fully covered, high flow mouthpiece gets the job done. With it's stylish, yet simple design, cleaning is easy since gunk has fewer parts and pieces to hide in. Soft-touch carrying loop folds so it can stowaway in your lunch bag or backpack.

FEATURES

- 16oz/465ml
- Cap keeps high-flow mouthpiece clean
- Soft-touch carrying loop
- Lock prevents accidental leaks or spills
- Easy to clean/dishwasher safe

COLORS



*New
Patterns!*

MODEL #ZK202



Design Details

1 Protective cap keeps mouthpiece clean for use

2 Large, high-flow, easy to clean mouthpiece

3 Lock keeps cover closed and secure

4 Press button to open spring loaded lid



ULTRALIGHT STAINLESS STEEL BOTTLE

A sleek, lightweight stainless steel design. Hinged retaining ring ensures the lid never gets lost. Flexible carrying loop provides for ultimate utility. BPA and phthalate free.

FEATURES

- 18oz/500ml
- Lightweight
- Leak-proof
- High-quality 18/8 stainless steel
- Soft-touch carrying loop
- Easy to clean/dishwasher safe

COLORS



MODEL #ZK203



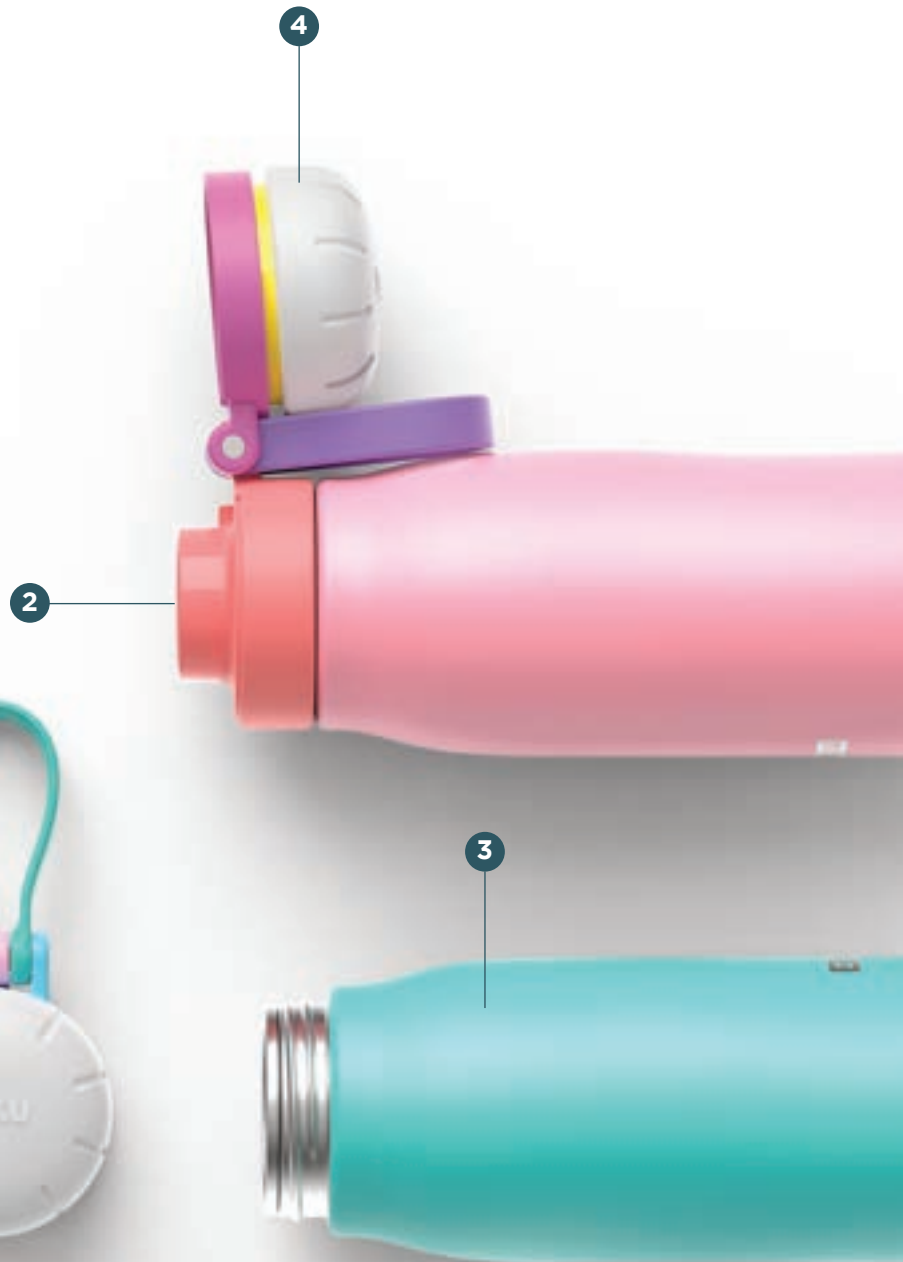
Design Details

1 Smart, no-edge design means less places for gunk to collect

2 Large, high-flow, easy to clean mouthpiece

3 Steel provides the most durable drinking experience

4 Unscrew hinged cap and flip open to drink—never misplace or lose another cap





DESIGN YOUR LUNCH

*Repositionable containers
and leak-proof design
means that you can
customize Neat Bento
to fit every meal.*



NEAT BENTO™

Kids can be picky eaters, so why limit their lunches to one rigid box? ZOKU's Neat Bento adjusts to fit every delicious and nutritious meal, encouraging limitless lunch ideas. Compact design and soft touch handle makes Neat Bento easy to carry or fit in a backpack.

FEATURES

- 8.7" x 8" x 2.5"
- Leak-proof design
- Kid-friendly latches
- Soft touch, carrying handle
- Portable, compact design
- Easy to clean/dishwasher safe
- Set includes 1 dual compartment tray and 2 removable containers with lids

COLORS



MODEL #ZK311



Design Details

- 1** Two repositionable containers with lids (2oz and 4.5oz)
- 2** Gaskets provide watertight seal and prevent leaks between compartments
- 3** Containers fit snugly in tray and do not slide during transport



NEAT BENTO JR.™

Get kids excited about eating with ZOKU's Neat Bento Jr. Perfect for preschool on up, the Jr. fits a complete meal and is easy to clean. Compact design makes it easy to toss into a backpack.

FEATURES

- 6.8" x 5.0" x 2.0"
- Kid-friendly latch
- 2 in 1 optimized storage zones
- Easy to pack divider
- Portable, compact design
- Easy to clean / dishwasher safe

COLORS



MODEL #ZK312





KIDS POCKET UTENSIL SET

ZOKU's Kids Pocket Utensil Set is easy to use and even easier to clean! The neatly nesting set of 3 utensils includes a spoon, fork and knife. The utensils are made of durable 18/8 stainless steel and stow snugly into the slim sanitary travel case. The Pocket Utensil Set comes in many fun designs and is made to fit easily in a backpack or lunchbox. Now your kids can put their soiled utensils back in the case and keep their backpacks and lunchboxes free of any food debris. Utensils and case are dishwasher safe. BPA and phthalate free.

FEATURES

- 18/8 Stainless Steel construction
- Easy To Clean
- Dishwasher Safe
- Leakproof Compact Carrying Case keeps utensils clean and protected
- Small and Lightweight, ideal for travel

COLORS



MODEL #ZK313





*colorful & fun
designs*



DRINKWARE

A thirst for life needs a container that can keep up. From piping hot to ice cold, stainless steel to glass core, we've got what you need to keep you moving.

POCKET STRAW

ZOKU presents the Pocket Straw, a modern reusable straw made of 18/8 stainless steel, with a silicone mouthpiece for comfort when sipping. This small and lightweight straw telescopes in and out for storage and easy transport on the go. Enjoy your drinks and do your part to help the environment all in one!

FEATURES

- 18/8 Stainless Steel reusable straw with silicone mouthpiece
- Easy to clean & dishwasher safe
- Telescopes for storage and easy transportation on the go
- Extends up to 9 inches
- Cleaning brush included

COLORS



MODEL #ZK307-200







JUMBO POCKET STRAW

The Jumbo Straw has the same great features of our original Pocket Straw but with an extra wide cylinder designed to effortlessly sip tapioca pearls, bobas, and jellies from your bubble teas, cocktails, smoothies, and shakes.



FEATURES

- 18/8 Stainless Steel reusable straw
- Easy to clean & dishwasher safe
- Telescopes for storage and easy transportation on the go
- Extends up to 8.5 inches
- Special cap designed to easily puncture through bubble tea caps

COLORS



MODEL #ZK314







TREES ARE COOL

*1 Bottle
Purchased*

=

1 Tree Planted

TREE PLANTING PROGRAM

ZOKU is excited to announce our Trees Are Cool tree planting campaign in partnership with Eden Reforestation Projects. For every one of our Vacuum Insulated Stainless Steel bottles or tumblers purchased, ZOKU will plant a tree on your behalf. By choosing to use a ZOKU bottle, you are significantly reducing the use of single use plastic and are also giving back to the planet.


TREES KEEP THE EARTH COOL

Trees enrich our lives in so many ways that are visible and invisible. They are the quiet and mighty heroes of planet earth. They produce oxygen and consume CO2 helping to make our planet cooler, They literally provide the necessary environment for life to thrive on earth. They create habitats for wildlife, protect land and shorelines from erosion, and beautify landscapes.



HELPS LOCAL COMMUNITIES

In many parts of the world rapid deforestation has led to topsoil erosion threatening farmers ability to grow food. Mangrove forests are threatened and help protect breeding grounds for all kinds of birds and marine life. Planting trees in these sensitive areas will help rebuild not only these delicate ecosystems, but will also help grow the local economies close to the forests.



*Trees are cool!
That's why we're
planting them.*

TREES ARE A PART OF EVERYDAY LIFE

In addition to environmental protection, trees provide materials for countless products we use every day. Our homes, furniture, sports equipment, and musical instruments can all be made from wood. They even provide a sturdy place to tie our hammock to, or a quiet retreat to play an acoustic guitar under.

FOR MORE INFORMATION

If you want to learn more about this program, please visit zokuhome.com/trees or edenprojects.org.



Eden Reforestation Projects

18oz STAINLESS STEEL BOTTLE

Our vacuum insulated stainless steel bottle makes sure cold beverages stay that way for up to 24 hours and hot beverages do not lose steam, maintaining heat for up to 12 hours. Designed to take a hit, this double-walled bottle is made of 18/8 stainless steel, yet remains easy to carry with a removable paracord. BPA and phthalate free.



THERMAL PROPERTIES

18oz/500ml | 🔥 12 hours | ❄️ 40 hours



MODEL #ZK142

Design Details

1 Rapid Lock™ cap features less than 360° rotation for quick open and close

2 Polished, thread-free smooth mouthpiece stays clean and feels great

3 Vacuum insulated, double-walled 18/8 stainless steel for lasting hot or cold use



12oz STAINLESS STEEL BOTTLE



THERMAL PROPERTIES

12oz/350ml

🔥 10 hours

❄️ 30 hours



MODEL #ZK141

25oz STAINLESS STEEL BOTTLE



THERMAL PROPERTIES

25oz/750ml

🔥 15 hours

❄️ 70 hours



MODEL #ZK143

18oz STAINLESS STEEL PATTERN BOTTLES







*Style that
compliments
your style*

Just your style

CUSTOM ORDERS

ZOKU's bottles can be customized in a variety of ways for corporate initiatives and special events. We offer several high-quality print options.

LASER ETCHING

Laser etching reveals the natural beauty of stainless steel. Through this process we can create stunning results, making these bottles truly one of a kind.

COLOR PRINTING

Printing yields stunning results for multicolor artwork in an almost limitless array of vivid and vibrant colors.



FLIP TOP SPORTS BOTTLE

Meet your new workout buddy! The high-flow quick action cap is paired with a slim, vacuum insulated 18/8 stainless steel body to keep your drinks cool. Quench your thirst with the speed and ease of pressing a button and keep your focus on the game.

FEATURES

- 18oz/500ml Vacuum Insulated 18/8 stainless steel
- Easy one-push-open
- Locking feature
- Soft touch carrying loop
- High-flow mouthpiece
- Durable powder coat finish

COLORS



MODEL #ZK165



Design Details

1 Protective cap keeps mouthpiece clean for use

2 Large, high-flow, easy to clean mouthpiece

3 Lock keeps cover closed and secure

4 Press button to open spring loaded lid



20oz 3-IN-1 TUMBLER

Drink, sip, and seal with the 3-in-1 Tumbler. Hot or cold—water, coffee, juice, or tea—any beverage tastes its best and holds its temperature longer in stainless steel. And the press-fit lid securely seals your drink for spill resistant sipping on-the-go. Cold beverages stay that way for up to 24 hours. And hot beverages do not lose steam, maintaining heat for up to 6 hours.



FEATURES

- 20oz/550mL
- 3-In-1 lid; Sip, Seal, & Drink
- Press-fit lid
- Double-walled vacuum insulated stainless steel

THERMAL PROPERTIES

20oz/600ml | 🔥 6 hours | ❄️ 24 hours

MODEL #ZK144



New Colors & Patterns



Introducing our updated 3-in-1 Tumbler collection with new colors and a textured finish.

12oz 3-IN-1 TUMBLER

A cup for hot, cold, and everything in between. It's modern stylish look fits perfectly into your dinner party Insta-story. Great for your morning coffee routines: lounging with a good book, scrolling through your news feed, or walking the dog. Planning a picnic? Bring these (and your conscience) to the park and forgo the disposable plastic cups. Our 12oz Tumbler provides a lighter experience compared to its 20oz sibling. Those that appreciate simplicity and versatility will find this mug is a perfect companion for all the small things that make life wonderful.



FEATURES

- 12oz/350mL
- 3-In-1 lid; Sip, Seal, & Drink
- Press-fit lid
- Double-walled vacuum insulated stainless steel

THERMAL PROPERTIES

12oz/350ml | 🔥 4 hours | ❄️ 17 hours



MODEL #ZK163



ZOKU

ZOKU

ZOKU

ZOKU

GLASS CORE & TEA STRAINER

Brew your favorite tea on the go! Easily brew loose leaf tea in your ZOKU Glass Core Bottle. Our infuser is made from stainless steel, and is easy to assemble and clean.

FEATURES

- On-the-go brewing solution
- Borosilicate glass bottle, and durable 18/8 stainless steel
- Fine perforation prevents tea leaves from falling into your drink, and produces cleaner brew
- Silicone gasket keeps your infuser leak-free and in position
- Easy to use, easy to clean

MODEL #ZK160

Tea Infuser

MODEL #ZK161

Glasscore with Tea Infuser





GLASS CORE BOTTLE

Enjoy hot or cold beverages in their crispest form—fresh from this pure borosilicate glass bottle. Free yourself to switch between beverages without the worry of the bottle absorbing smells or flavors. The glass thread-free mouthpiece is smooth to drink from. Rapid Lock™ Technology, a 1/4-turn locking cap system is secure, locks with a click, is leak-proof, and worry free. BPA and phthalate free.

COLORS



MODEL #ZK129	12oz/350ml
--------------	------------

MODEL #ZK128	16oz/465ml
--------------	------------

ICED COFFEE MAKER

Iced coffee with no ice needed? It's possible with the quick-chilling power that turns hot coffee into iced coffee in minutes.

FEATURES

- Available in 2 colors
- 11oz capacity
- 1 Stainless steel inner core
- 1 Protective sleeve
- 1 Press-fit spill-resistant lid
- 1 Straw
- Turn piping hot coffee or tea into a delicious chilled beverage without adding ice

COLORS



MODEL #ZK121





COCKTAIL ICE

Say “cheers” to a cool new way to liven up your cocktails. This unique line of premium ice molds and festive ice trays will make any hour happy.

COCKTAIL ICE MOLDS

Chill your favorite drink without diluting the flavor! Simply fill the mold, let it freeze, then easily open it to remove the ice.



ICEBERG ICE MOLDS

Set contains two
iceberg-shaped
ice molds

MODEL #ZK155



CUBE ICE MOLDS

Set contains
two cube-shaped
ice molds

MODEL #ZK153



JACK ICE MOLDS

Set contains
two jack-shaped
ice molds

MODEL #ZK152



MIXOLOGY ICE MOLD SET

Set contains three
silicone ice molds –
jack, ball, and cube

MODEL #ZK135



ICE BALL MOLDS

Set contains two
ice ball molds

MODEL #ZK118



SHOOTER ICE MOLDS

Set contains four
silicone shot glass ice
molds with four bases
and support tray

MODEL #ZK140

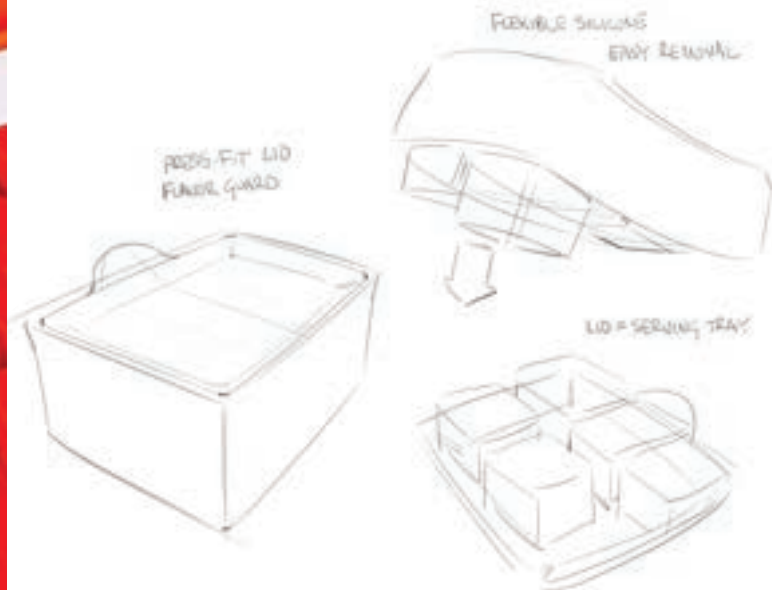


COCKTAIL ICE TRAYS

Serve up a tray of playful messages with these Cocktail Party Ice Trays.

FEATURES

- Flexible silicone mold
- Easy to remove ice formations
- No rinsing required



CHEERS ICE TRAY

Set contains one silicone ice tray with wording “Cheers” and “Salute” repeated

MODEL #ZK139



PARTY ICE TRAY

Set contains one silicone ice tray with four stylized party themed phrases

MODEL #ZK154



NAUGHTY OR NICE ICE TRAY

Set contains one silicone ice tray with wording “Nice” and “Naughty” repeated

MODEL #ZK138



LOVE ICE TRAY

Set contains one silicone ice tray with stylized love themed phrases

MODEL #ZK157



JUMBO ICE TRAYS

Set contains two space saver, stackable silicone trays with six large ice molds each—plus two flavor guard lids

MODEL #ZK136



COOL MOJI ICE TRAY

Silicone ice mold to produce ten fun emoticon shapes—includes support tray

MODEL #ZK137





FROZEN TREATS

*Whether you prefer to pop
'til you drop, shake it
up, or scream for ice cream
our extensive line of Frozen
Dessert Makers has
something for everyone.*



POP MOLDS

Once you start with these easy-to-use Pop Molds, you'll be un-pop-able. Transform your favorite juices, yogurts, and purees into delicious frozen pops overnight with these reusable sets.

CLASSIC POPS

- Six removable molds
- Six sticks with drip guards

MODEL #ZK114



MOD POPS

- Stores in freezer door
- Six removable molds
- Six sticks with drip guards

MODEL #ZK132



MINI POPS

- Nine silicone molds
- Nine sticks with drip guards

MODEL #ZK115



SUMMER POPS

- Six silicone molds with spill-resistant lids
- One base

MODEL #ZK145

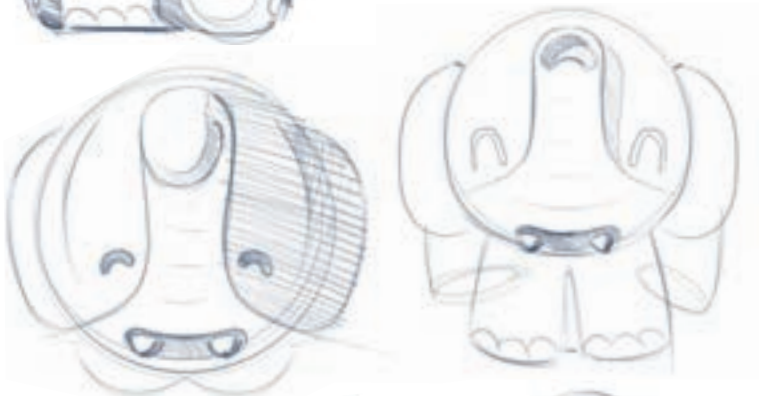


ZOKU RING POPS

- Eight removable molds
- Eight ring sticks with drip guards

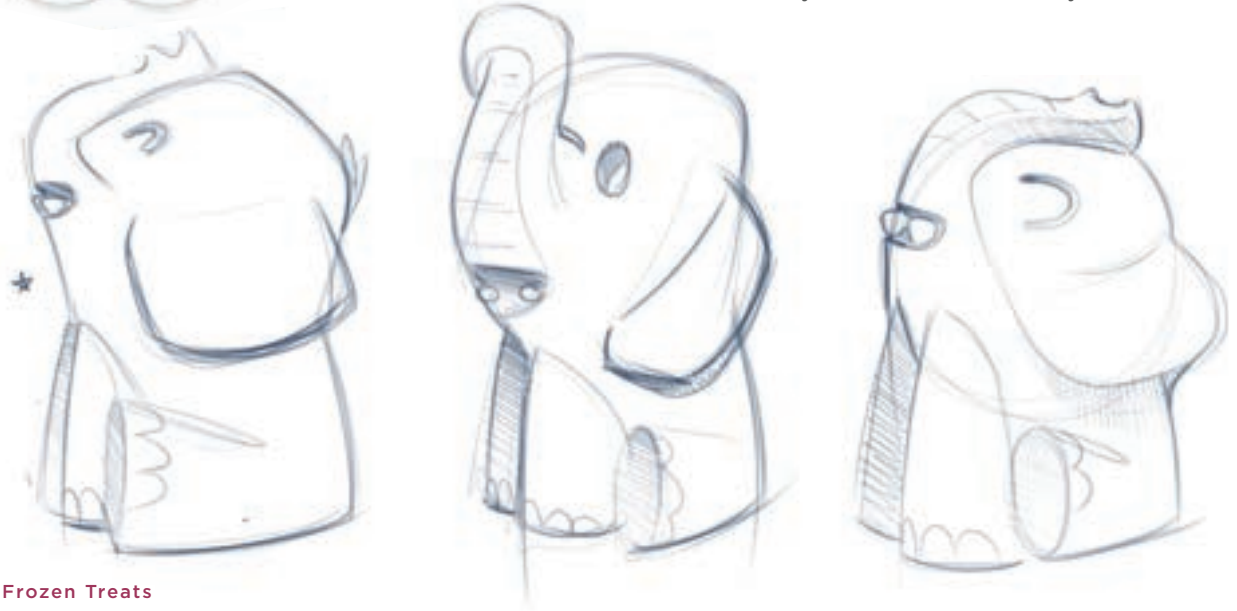
MODEL #ZK133





CHARACTER POP MOLDS

Explore the final frontier, the depths of the ocean, and everywhere in between with these adorably entertaining characters. They're the sweetest friends you'll meet.



SPACE POPS

- Five rocket molds & one silicone astronaut mold
- Six sticks with drip guards

MODEL #ZK124



SAFARI POPS

- Four silicone pop molds
- Four sticks with drip guards

MODEL #ZK134



FISH POPS

- Six silicone pop molds
- Six sticks with drip guards

MODEL #ZK119



POLAR POPS

- Six silicone pop molds
- Six sticks with drip guards

MODEL #ZK125



DINO POPS

- Six silicone pop molds
- Six sticks with drip guards

MODEL #ZK130



CHARACTER POPS

- One silicone character mold
- One stick with drip guard

MODEL #ZK123



CHARACTER POP TRAY MOLDS

Designed to neatly stack and make the most out of precious freezer space. Tabs on both sides of the mold help you twist the tray with ease making removing the popsicles a breeze. To top it all off, the spill proof lid prevents juice from spilling when handling.

CAT & DOG ICE POP MOLDS

One stackable tray with two dog and two cat molds each—plus four sticks and cover

New!



SHARK ICE POP MOLDS

One stackable tray with four shark pop molds each—plus four sticks and cover

New!



MODEL #ZK171



MONSTER ICE POP MOLDS

One stackable tray with four monster pop molds each—plus four sticks and cover



MODEL #ZK170



UNICORN ICE POP MOLDS

One stackable tray with four unicorn pop molds each—plus four sticks and cover



MODEL #ZK159

FLAMINGO ICE POP MOLDS

One stackable tray with four flamingo pop molds each—plus four sticks and cover



MODEL #ZK158

*new design, improved quality,
and includes more accessories
than the original*





QUICK POP MAKER

Freeze ice pops in as little as seven minutes with the patented ZOKU Quick Pop® Maker! Make striped pops, yogurt pops, or even flavored core pops right on your countertop, with no electricity needed. To enjoy Quick Pops at a moment's notice, simply store the compact base in your freezer. BPA and phthalate free.

INCLUDES

- One Quick Pop® Maker
- Six Sticks with Six Drip Guards
- One Super Tool
- Two Pour Cups
- One Character Kit



TRIPLE QUICK POP MAKER

Freeze up to 9 pops before refreezing unit.

MODEL #ZK101-2BL



QUICK POP RECIPE BOOK

Over 40 quick and delicious recipes,

MODEL #ZK106



SINGLE QUICK POP MAKER

Freeze up to 3 pops before refreezing unit.

MODEL #ZK110-RD



STORAGE CASE

Airtight container preserves the freshness of up to six pops.

MODEL #ZK104



QUICK POP TOOLS

- 3 drip-free pour cups
- 1 heart & 1 star stencil
- 1 fruit wand
- 1 Siphon & 1 Angle Tray

MODEL #ZK103



SLUSH & SHAKE MAKER

Make healthy slushies, milkshakes, frozen alcoholic drinks (yes!), and fruit smoothies in as little as seven minutes with our simple, yet high-performance, design-driven slushy maker. Try ingredients such as homemade juices, blended fruit, malted milk, chocolate milk, sweetened coffee, soda, floats, eggnog, energy drinks, soy milk—we could keep going and so could you.

INCLUDES

- 1 Inner core
- 1 Protective sleeve
- 1 Spoon

COLORS



MODEL #ZK113



Recipe Book

THE ART OF SLUSH

- 40+ recipes included
- 96 Pages, soft-cover
- Author: Jennifer Farley

MODEL #ZK117



96
pages

ICE CREAM MAKER

Make individual portions of ice cream, custard, frozen yogurt, gelato, sorbet, or sherbet in as little as ten minutes! Make frosty favorites like Rocky Road Ice Cream, Dulce de Leche Gelato, and Minty Melon Sorbet—or create your own flavors. Top your creations with fresh fruit, candy pieces, or a classic bright red cherry on top.

FEATURES

- BPA and phthalate free
- 5 Fl. Oz. Capacity
- 3.6" x 3.6" x 8.25"

COLORS



MODEL #ZK120



Recipe Book

ENDLESS SUMMER

- 50+ recipes included
- 96 Pages, soft-cover
- Author: Trish Lobenfeld

MODEL #ZK122





ZOKU
reusable
POCKET SET
UTENSIL SET

MOOD
KNIFE
SPOON
FORK

reusable
POCKET SET
UTENSIL SET

ZOKU
reusable
POCKET SET
UTENSIL SET

ZOKU
reusable
POCKET SET
UTENSIL SET

FORK
KNIFE
SPOON

DISPLAYS

*Elevate your store
with a freestanding floor
display. Our displays
are easy to set up with
a small footprint.*



HYDRATION FLOOR DISPLAY

This sturdy, freestanding floor display is made of metal and ships flat. The powder coated finish is resistant to chipping, fading and wearing. The slotted backboard lets you adjust the height of shelves easily and is able to fit any ZOKU product.

APPROXIMATE SIZE

- L15" x W15.75" x H67"

Products ordered separately.

MODEL #ZKHY-FD



COUNTERTOP DISPLAYS



HYDRATION CDU

- Approximate Size:
L13.75" x W12" x H14.5"
- Products ordered separately.

MODEL #ZKHY-CDU



ICE BALL CDU

- Approximate Size:
L11.75" x W15.5" x H10.75"
- Includes 12 Ice Ball Molds

MODEL #ZK118-CDU



SLUSH & SHAKE CDU

- Approximate Size:
L13.5" x W18" x H12.75"
- Includes 12 Slush & Shake Makers

MODEL #ZK113-CDU



CHARACTER POPS CDU

- Approximate Size:
L14.75" x W11.25" x H11.5"
- Includes 24 Character Pops (3 sets of each)

MODEL #ZK123-CDU

COUNTERTOP DISPLAYS



POCKET STRAW CDU

- Approximate Size:
L9" x W10.7" x H10.6"
- Includes 24 pieces per CDU
(4 of each color)

MODEL #ZK307-200-MX



JUMBO POCKET STRAW CDU

- Approximate Size:
L9" x W10.7" x H10.6"
- Includes 24 pieces per CDU
(8 of each color)

MODEL #ZK314-MX



POCKET UTENSILS CDU

- Approximate Size:
L9" x W10.7" x H10.6"
- Includes 18 pieces per CDU
(6 of each color)

MODEL #ZK308-MX



KIDS POCKET UTENSILS CDU

- Approximate Size:
L9" x W10.7" x H10.6"
- Includes 18 pieces per CDU
(6 of each color)

MODEL #ZK313-MX



LICENSING

ZOKU partners with global brands and creatively expresses the brand in ZOKU's products. These partnerships allows our family to grow as we are introduced to our partners customers.

COCA-COLA®

Coca-Cola is one of the most recognized brands in the world. Designed to appeal to the Coca-Cola lover—meet the Coca-Cola Float & Slushy Maker, Pocket Straw and Pocket Utensils.

STORE FLOOR DISPLAY

- L18" x W19" x H65" (30 pieces)
- L11.75" x W15.5" x H10.75" (12 Pieces)

MODEL #CC113-FD



COUNTERTOP DISPLAY UNIT

- L11.75" x W15.5" x H10.75"
- Holds 12 Pieces

MODEL #CC113-CDU



COCA-COLA SLUSHY MAKER

- 1 Inner core
- 1 Protective sleeve
- 1 Spoon

MODEL #CC113



COCA-COLA POCKET STRAW

- 1 Case
- 1 Reusable Straw

MODEL #CC307



COCA-COLA POCKET UTENSIL

- 1 Case
- 1 Fork
- 1 Knife
- 1 Spoon

MODEL #CC308



MINUTE MAID

With more than 100 different flavors and varieties of high-quality juices, what says Ice Pop or Slushy better than Minute Maid. These Minute Maid inspired Ice Pop Molds and Slushy Maker lets you bring the family together while making delicious treats.

MINUTE MAID POP MOLDS

- 6 Molds
- 6 Sticks
- 1 Base

MODEL #MD001



MINUTE MAID SLUSHY MAKER

- 1 Inner Core
- 1 Protective Sleeve
- 1 Spoon

MODEL #MD113





ZOKU®

Intellectual Property

ZOKU and/or its licensor's takes its Intellectual Property seriously and expects others (e.g. vendors, competitors, retailers, and distributors) to do so as well. ZOKU and/or its licensor's has invested considerable financial resources to invent, design, manufacture, and market the ZOKU® Quick Pop® Maker and other products in the U.S. and internationally.

Patents, Trademarks, and Copyrights. ZOKU and/or its licensor's hold a wide variety of intellectual property rights, including U.S. Patent Numbers 8,961,163 B2; 8,057,207 B2; 8,430,658 B2; D626,384 S; D626,307 S; D630,407 S; D634,988 S; D637,035 S; D640,120 S; D642,021 S; D642,022 S; D655,147 S; D658,948 S; D689,746 S; D689,747S; D690,169 S; D705,607 S; D740,073 S; D733,769 S, European Community Design numbers 001776220-0001; 001776220-0002; 001776220-0003; 001776220-0004; 001863945; 002275008-0001; 002275008-0002; 002275008-0003, Canadian Patent Number 2,749,324, Canadian Industrial Design Registration Number 137761, Australian Patent Numbers 2010204996; 333896; 350412, Japanese Registered Design Number 1419335, Chinese Patent Number ZL201080007660.2, U.S. and International Utility Patent Applications and U.S and International Design Patent Applications, U.S. and International Trademarks, Copyrights and Trade Secrets. Therefore, ZOKU will aggressively protect its Intellectual Property rights, involving the civil and criminal courts to the fullest extent allowed by law, including seeking injunctions to stop the sale of infringing products, impounding and destroying infringing products, and seeking substantial monetary damages (up to three times damages when available by law), and legal fees and costs. We invest in some of the best intellectual property enforcement available and have a global reach at all levels of various trade channels, including manufacturing, import/export, customs, distribution, and retail. Patent and trademark notices have been applied to all of ZOKU's relevant products and/or packaging to inform the trade that ZOKU and its licensor's have taken the appropriate steps to protect their Intellectual Property.

CONTACT

GENERAL INQUIRIES

info@zokuhome.com

SALES INQUIRIES

sales@zokuhome.com

PHONE

201.604.1253

WEBSITE

www.zokuhome.com

ADDRESS

720 Monroe Street, Suite C308
Hoboken, NJ 07030

SOCIAL MEDIA

INSTAGRAM

[@ZokuHQ](https://www.instagram.com/ZokuHQ)

TWITTER

[@ZokuHQ](https://twitter.com/ZokuHQ)

FACEBOOK

www.facebook.com/ZokuHQ

PINTEREST

www.pinterest.com/ZokuHQ

RECIPE BLOG

ZOKU provides free recipes on our blog on a regular basis for our devoted fans.

Visit us at: blog.zokuhome.com



ZOKU®

ZOKUHOME.COM